



**BlackBerry Connect  
Installation Guide  
for  
Nokia 9500 Communicator  
Nokia 9300 Smartphone**

## Content

1.	BlackBerry Email Connectivity sis-file installation .....	3
1.1	Installing from messaging folder .....	3
1.2	Installing from MMC.....	5

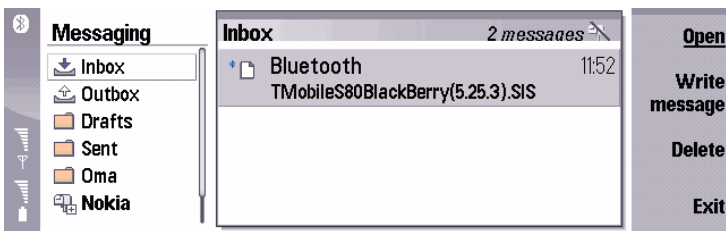
# 1. BLACKBERRY CONNECT INSTALLATION

BlackBerry SIS file is the BlackBerry Connect software for Nokia 9500 Communicator and Nokia 9300.

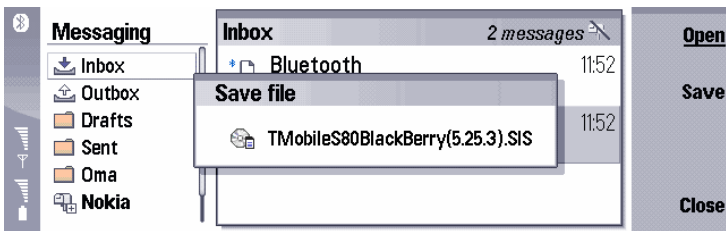
## 1.1 Installing from messaging folder

If the sis file has been sent to the device via Email, Bluetooth or infrared, the sis will be found from appropriate messaging folder.

Open the message containing S80\_BlackBerry.SIS. The location of the file depends on the transfer method. Follow the instructions on the screen.



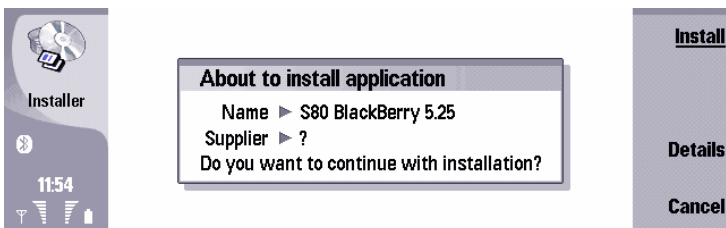
Click **Open** to start the installation.



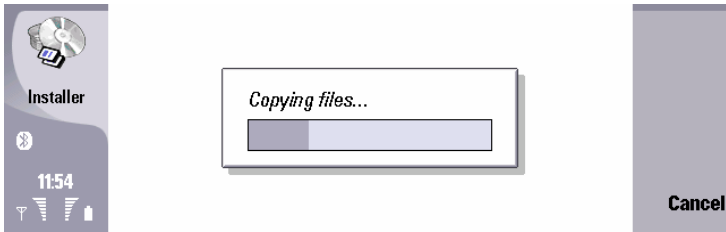
Click **Install anyway**.



Click **Install**.



See the proceeding of the installation.



Click **Yes** to continue.



Click **OK** to finish the installation.

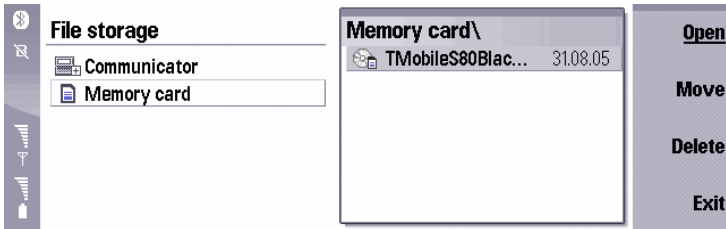


BlackBerry menu will be placed under messaging software. The menu will be seen after succesful activation of the service.



## 1.2 Installing from MMC

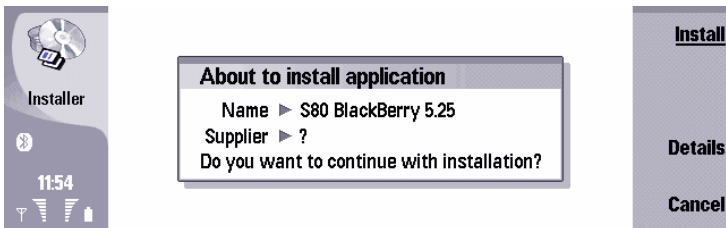
When installing the BlackBerry Connect software from MMC, go to **Office – File Manager – Memory Card** and open the S80\_BlackBerry.sis file.



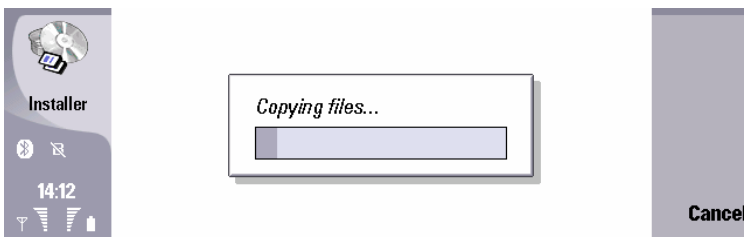
Click **Install anyway**.



Click **Install**.



See the proceeding of the installation.



Click **Yes** to continue.



