

T-MOBILE DSL MANAGER MANAGER USER GUIDE

TABLE OF CONTENTS

2	INTRODUCTION
3	CONFIGURING DSL MODEM FOR T-MOBILE INTERNET DSL
5	TURNING WIRELESS NETWORK ON OR OFF
5	CHECKING FOR UPDATES
6	TOOLS
6	APPENDIX A: WIRELESS SECURITY

INTRODUCTION

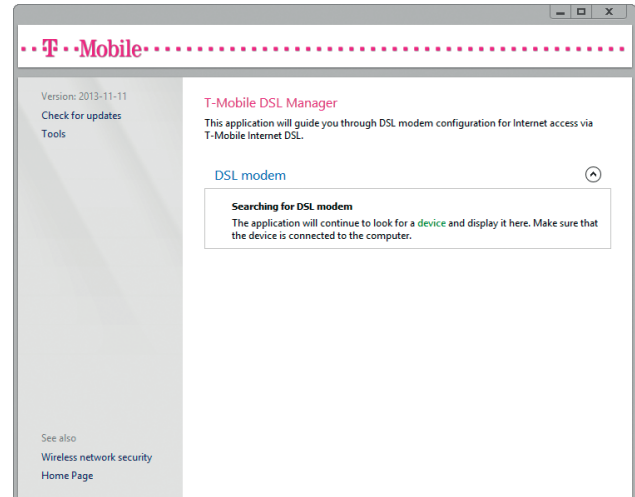
T-Mobile DSL Manager is a configuration tool for setting up your DSL modem for Internet access via T-Mobile Internet DSL. It can be used by anyone without the need for any special technical knowledge about DSL connection configuration. The whole setup process is done automatically.

T-Mobile DSL Manager has the following features:

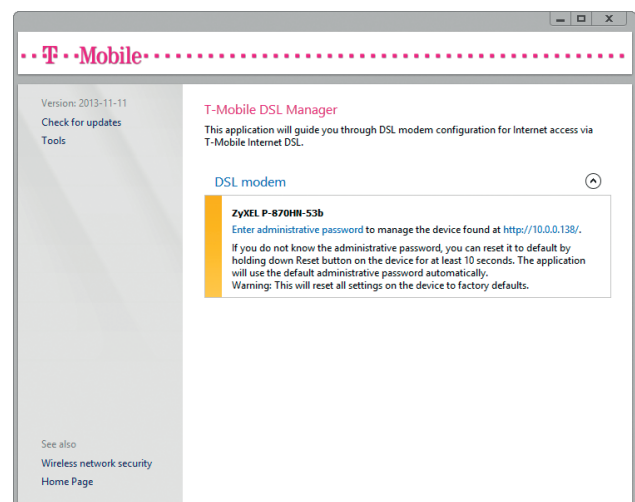
- Configures your modem for Internet access via T-Mobile Internet DSL.
- If your modem supports wireless networking, it will setup the wireless network along with the necessary security settings to prevent unauthorized use.
- Allows you to turn wireless networking on your modem on or off.
- Measure your connection throughput.

CONFIGURING DSL MODEM FOR T-MOBILE INTERNET DSL

When started, T-Mobile DSL Manager will search the network for a supported DSL modem. Your modem must be connected to the computer with a network cable.



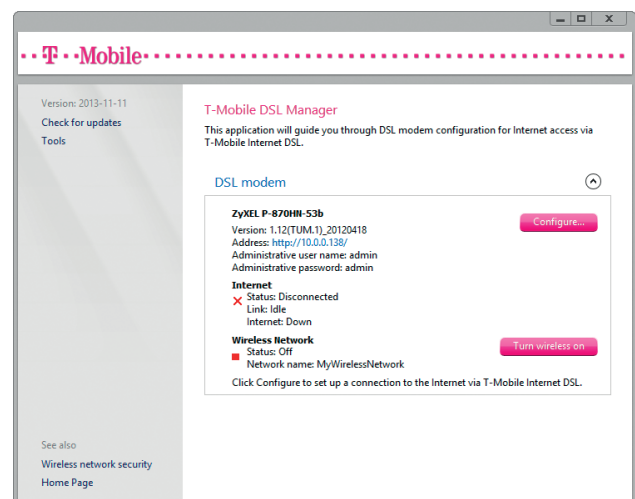
Enter device administrative password if default is not used.



Turn your modem on and wait for T-Mobile DSL Manager to find it. When the modem is detected, its name and current configuration details will be displayed. This can take up to a minute.

If your modem hasn't been found, check if there is a newer version of T-Mobile DSL Manager available which supports your modem. See **Checking for Updates** on page 5.

Click **Configure** to start configuring the modem for T-Mobile Internet DSL.



Enter name of the wireless network, select security type, and enter security key.

T-Mobile DSL Manager will automatically choose the recommended security settings and generate a security key.

Note: Although supported for compatibility with older wireless devices, you should not select WEP for security type, because it is relatively easy to overcome. A hacker could misuse your wireless network and Internet connection. **See Appendix A: Wireless Security** on page 6 for more information.

Click **Configure** when you are ready to configure your modem.

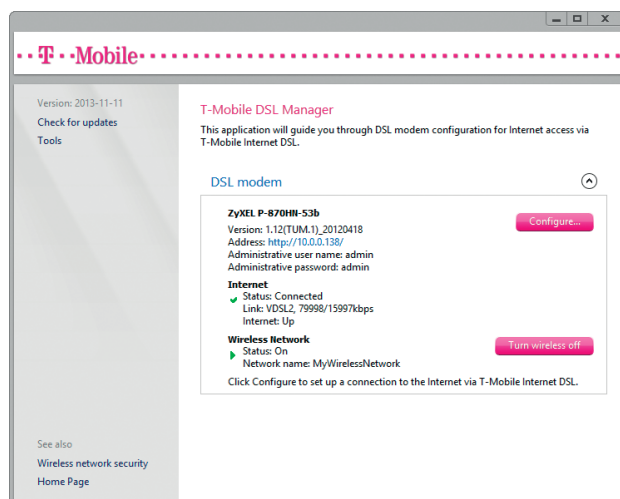
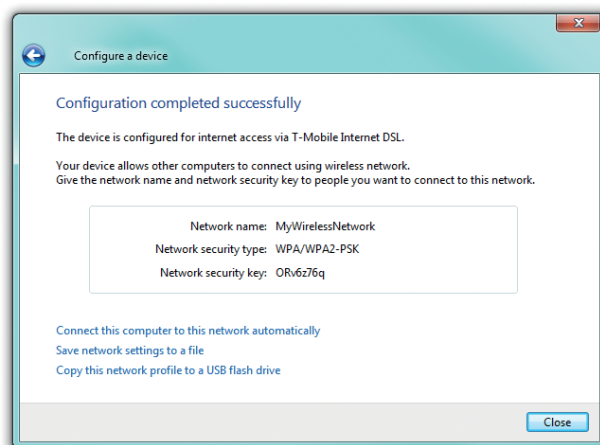
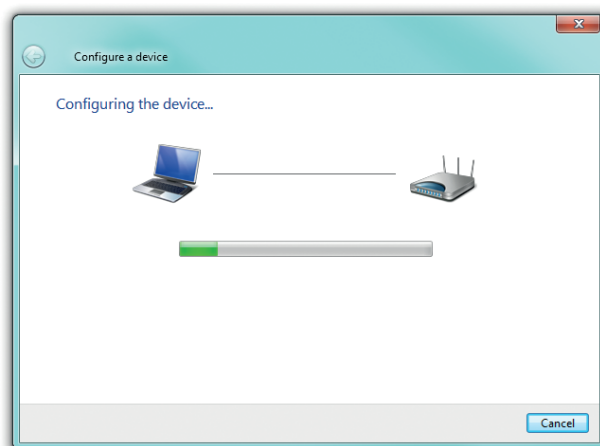
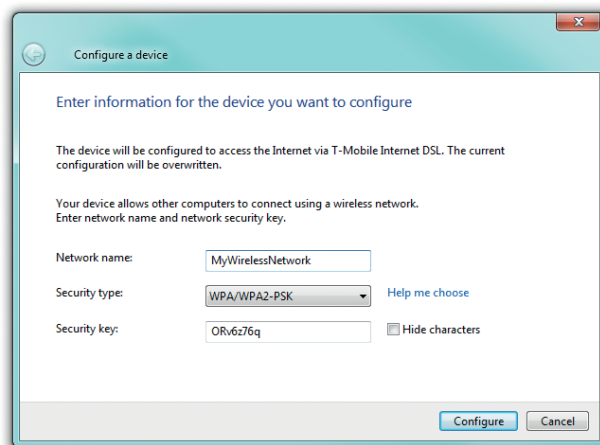
Wait until the modem is configured.

When the modem is configured, summary report is displayed with the results.

Click on the appropriate link if you want to save the new wireless network settings to a file, or copy the wireless network settings to a USB flash drive and transfer them to other computers so that they can access the Internet through the modem's wireless interface.

Click **Close** to finish the configuration wizard.

Check that T-Mobile DSL Manager displays the status of the DSL line as „Connected“. You should now be able to access the Internet.

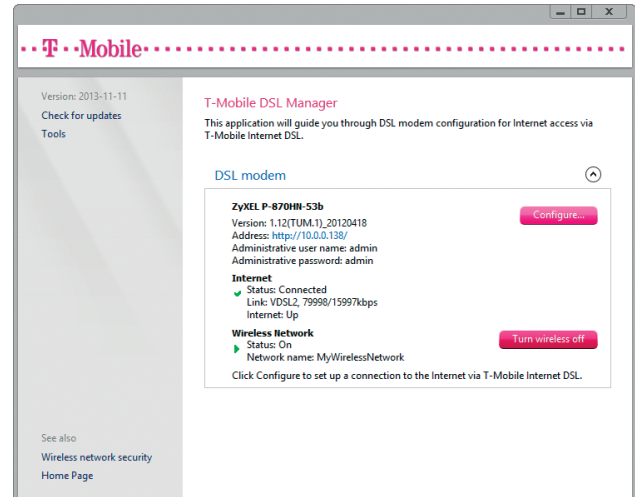


TURNING WIRELESS NETWORK ON OR OFF

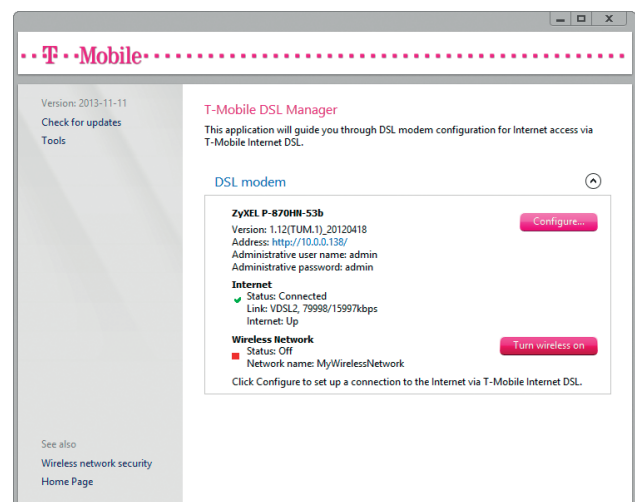
If you know that you will not be using your wireless network for some time, for example, if you are leaving for holiday, you should turn it off to save power and to prevent unauthorized usage of your network and Internet access. This is especially true when your modem's wireless security setting is WEP, which is relatively easy to overcome.

Start T-Mobile DSL Manager and wait until it detects your modem on the network.

Click **Turn wireless off**.



The status of the wireless network will change to „Off“. When you later want to turn the wireless network back on, click **Turn wireless on**.

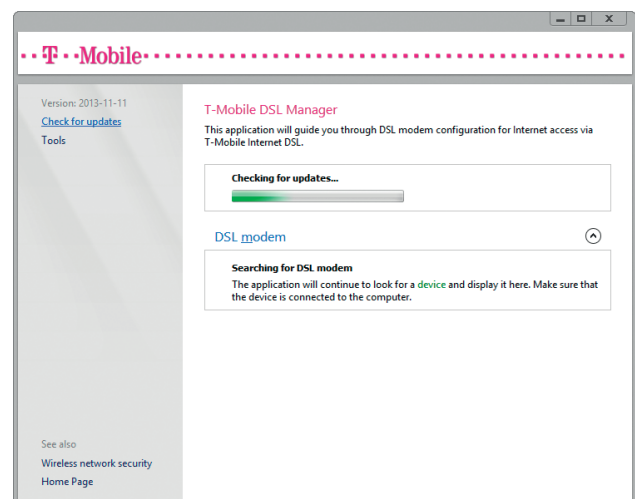


CHECKING FOR UPDATES

If T-Mobile DSL Manager couldn't find your modem, or it identified your modem as one which it doesn't support, you can check if there is a newer version of T-Mobile DSL Manager available which adds support for your modem.

Start T-Mobile DSL Manager.

At the top of the left pane, click **Check for updates**.

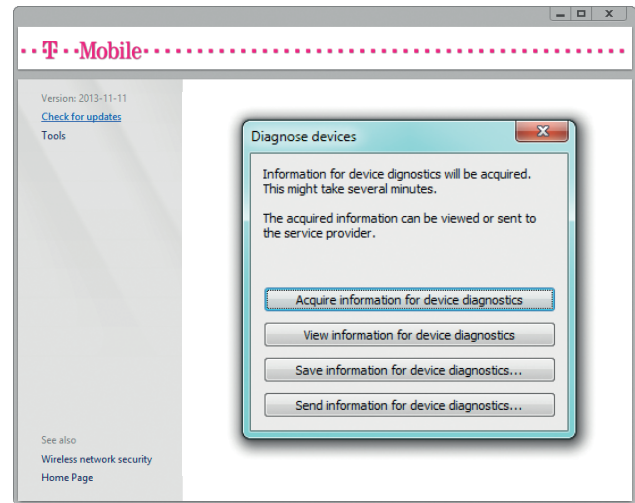


TOOLS

DIAGNOSE DEVICES

Start T-Mobile DSL Manager.

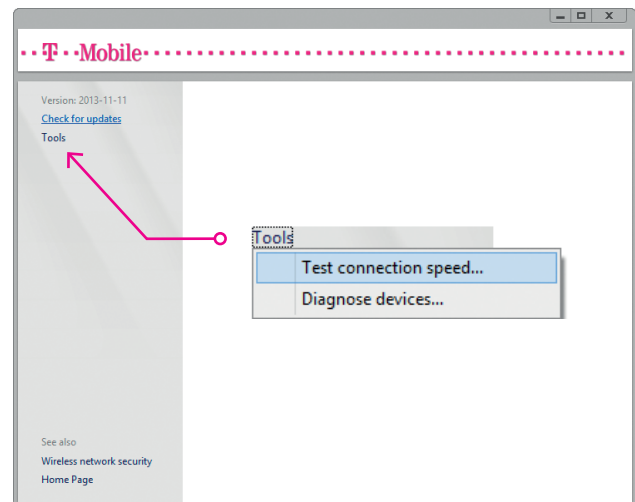
At the top of the left pane, click **Tools** and choose **Diagnose devices**.



CONNECTION SPEED

Start T-Mobile DSL Manager.

At the top of the left pane, click **Tools** and choose **Test connection speed**.



APPENDIX A: WIRELESS SECURITY

When installing a wireless network, it is important to secure it to prevent unauthorized access and misuse of your Internet connection. T-Mobile DSL Manager will automatically setup wireless security when configuring your modem.

The recommended type of wireless security is **Wi-Fi Protected Access (WPA/WPA2)**. Most current devices support this form of security. However, some older devices may not, and therefore T-Mobile DSL Manager also supports the much less secure type called **Wired Equivalent Privacy (WEP)**.

If you must set up your DSL modem to use WEP because some of your wireless devices support only this type of wireless security, it is recommended that you turn your wireless network off when you don't use it, as it might be misused by a hacker to attack computers on your network and on the Internet. For information on how to turn your wireless network off, see **Turning Wireless Network On or Off** on page 5.